

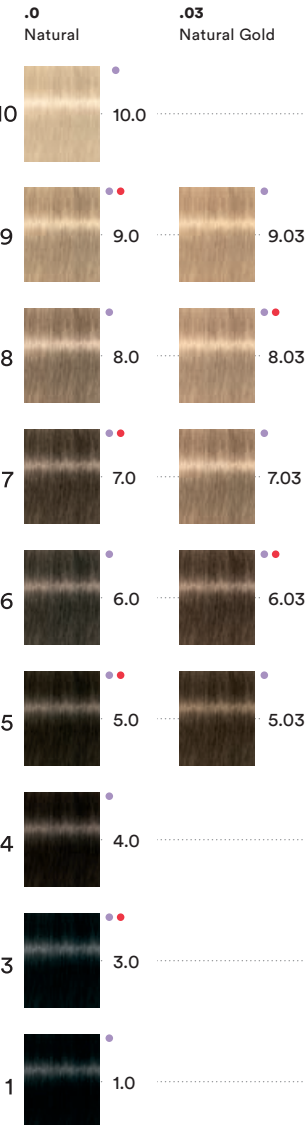
● Compatible with Color Transformer



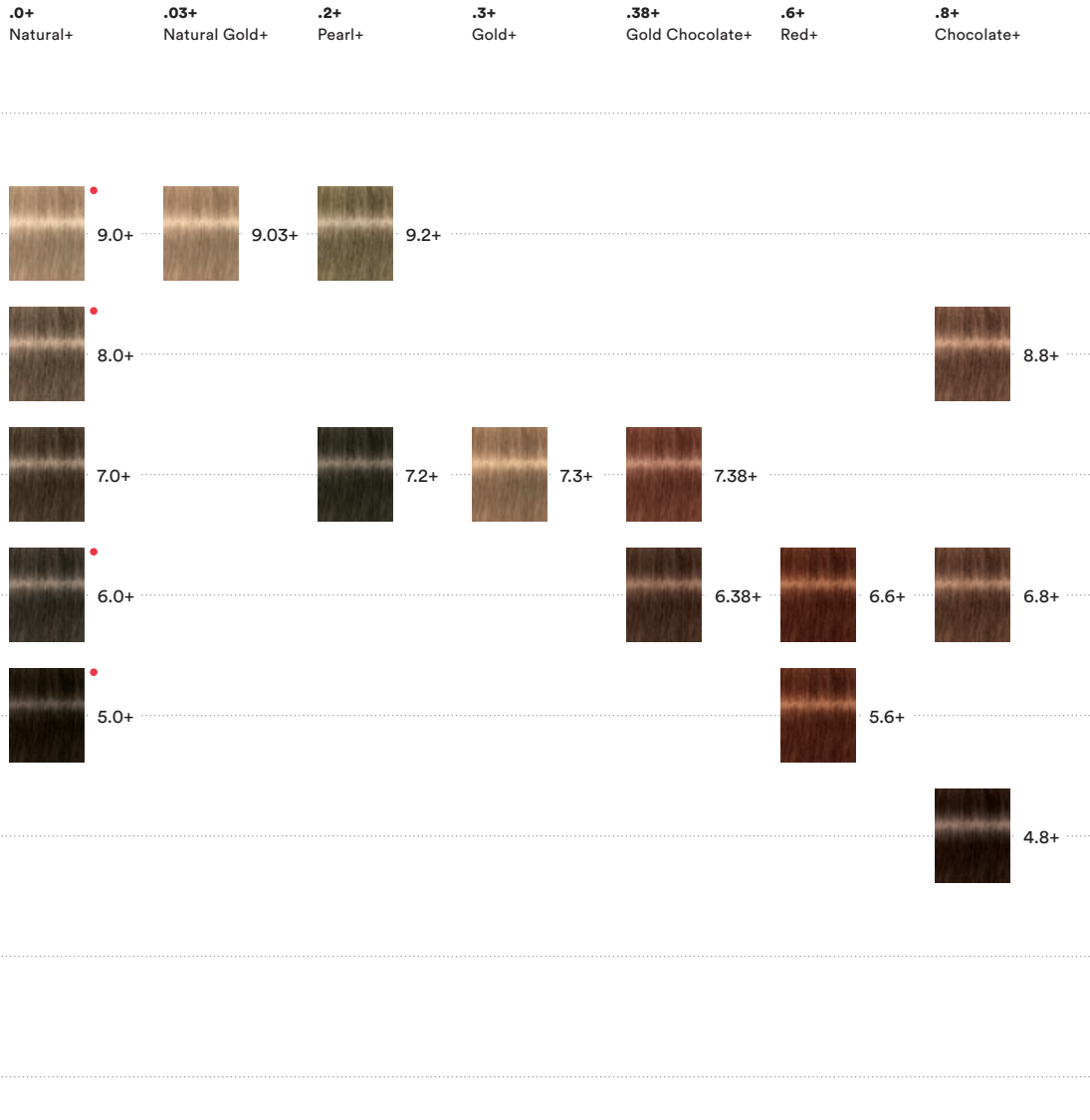
● Similar shade in XpressColor assortment



NATURAL 1:1 - Up to 100% coverage



INTENSE COVERAGE 1:1 - Up to 100% coverage on resistant hair



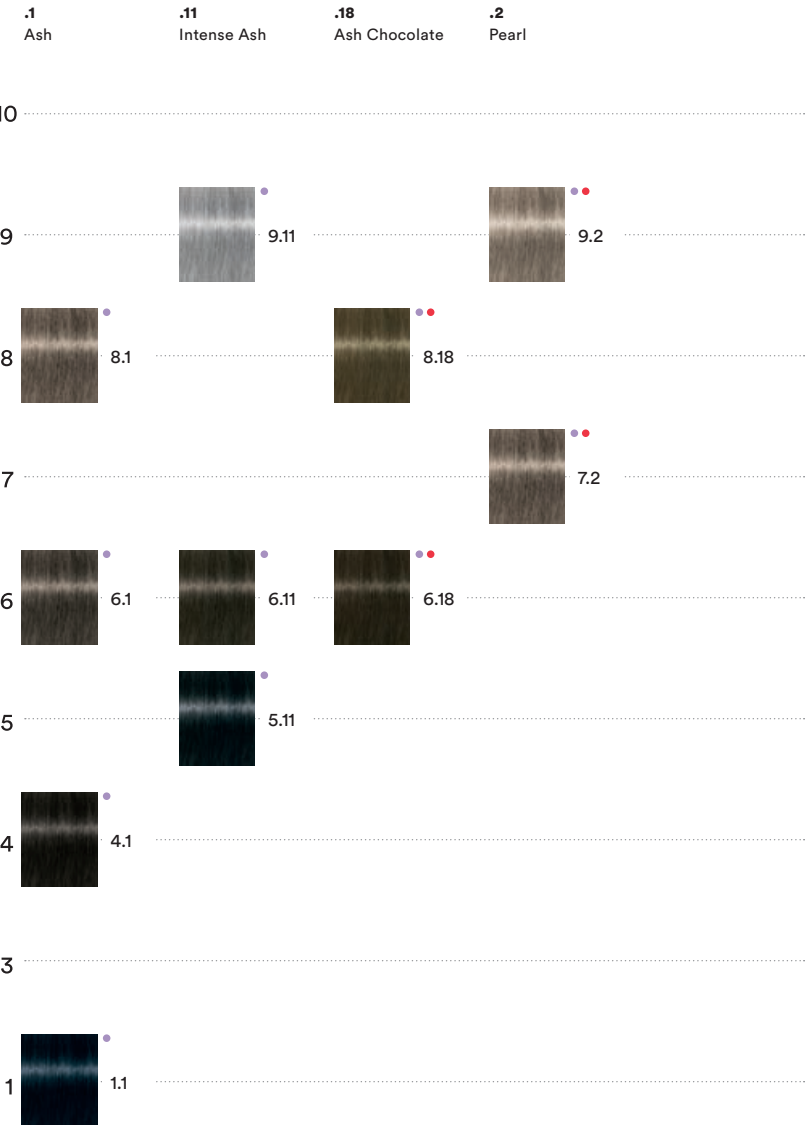
● Compatible with Color Transformer



● Similar shade in XpressColor assortment



COOL AND NEUTRAL 1:1 - Up to 70% hair coverage





FASHION 1:1 - Up to 70% hair coverage

